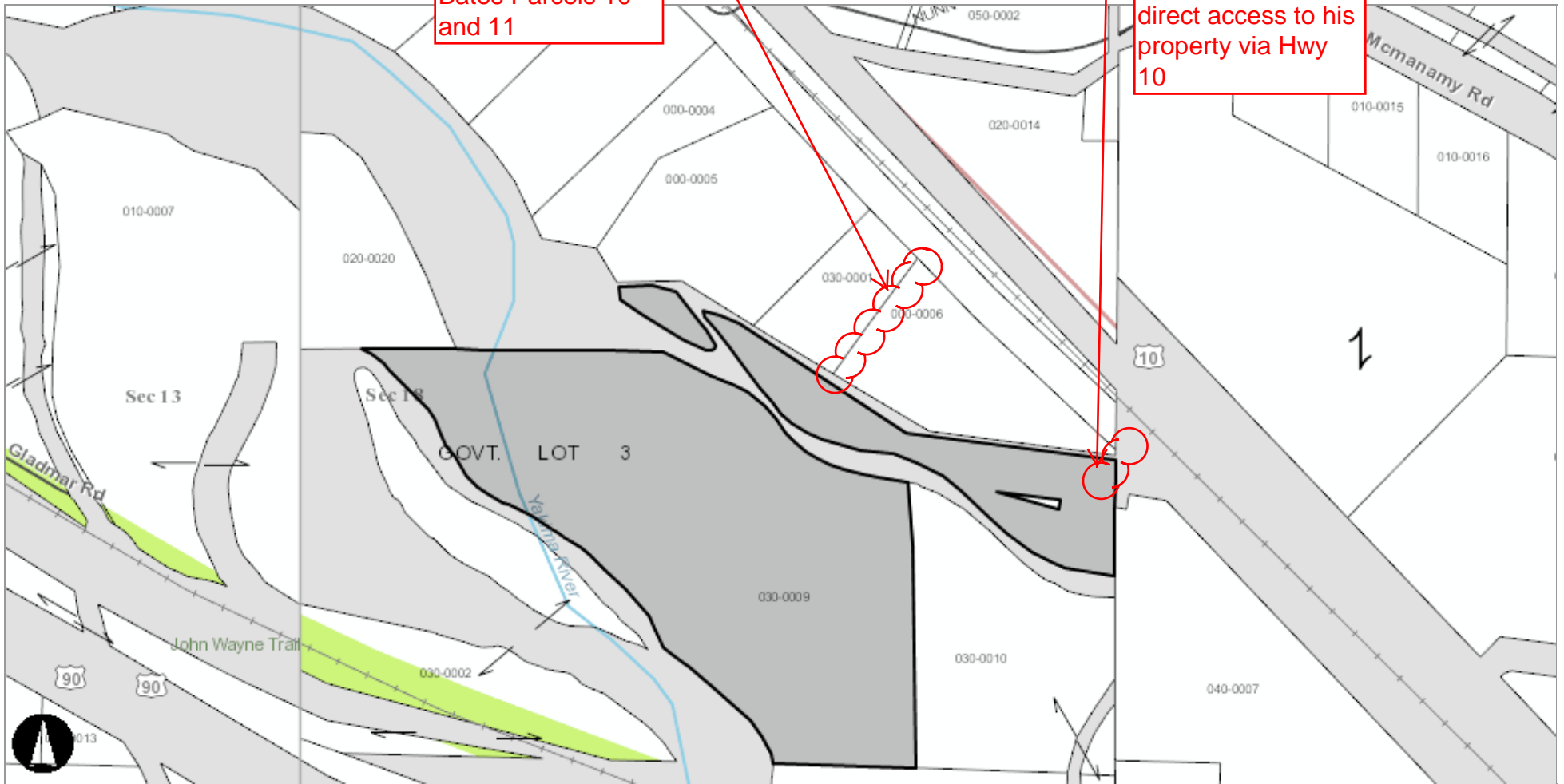


Carlson



30-foot access easement between/through Bates Parcels 10 and 11

Recommended access to be constructed by Carlson to enable direct access to his property via Hwy 10

Map Center: Township:18 Range:18 Section:18

Kittitas County Disclaimer

Kittitas County makes every effort to produce and publish the most current and accurate information possible. No warranties, expressed or implied, are provided for the data, its use, or its interpretation. Kittitas County does not guarantee the accuracy of the material contained herein and is not responsible for any use, misuse or representations by others regarding this information or its derivatives.

